

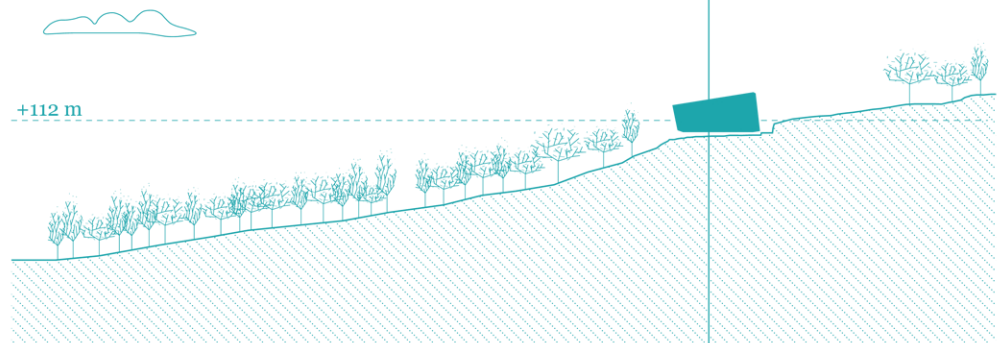
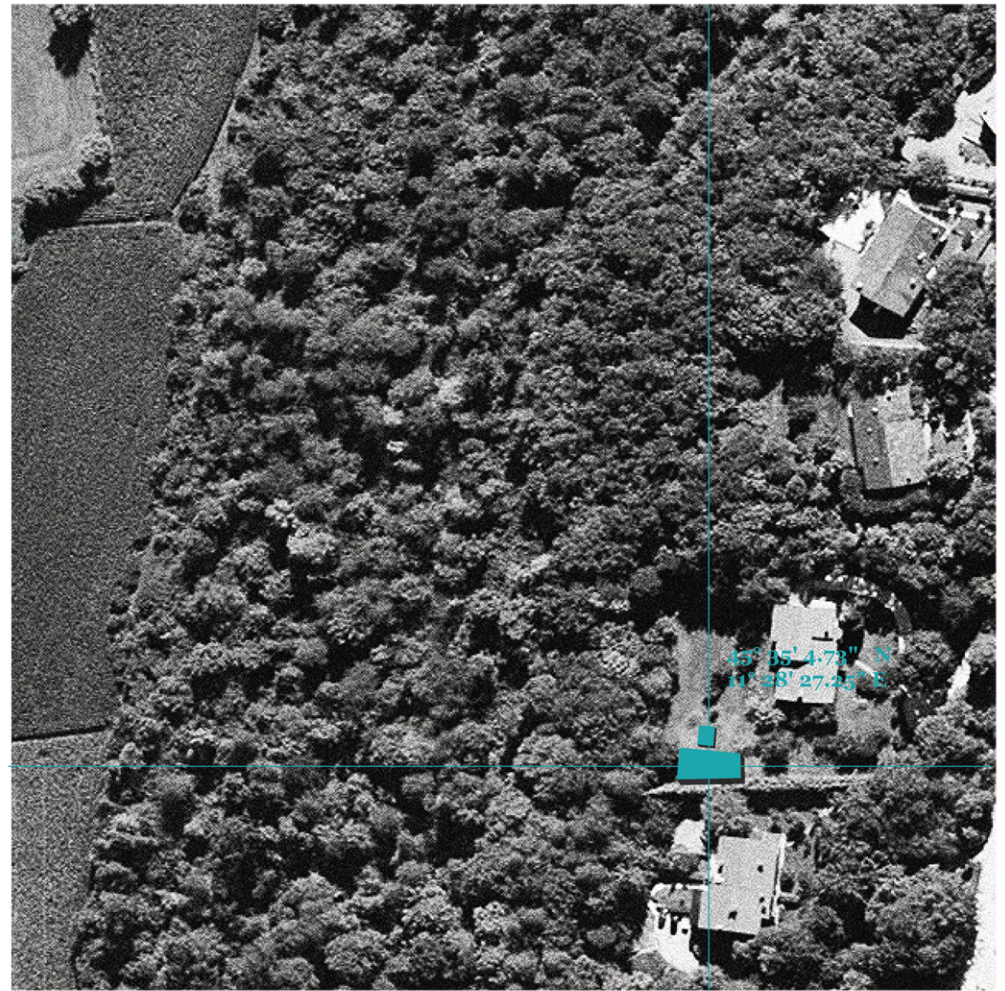


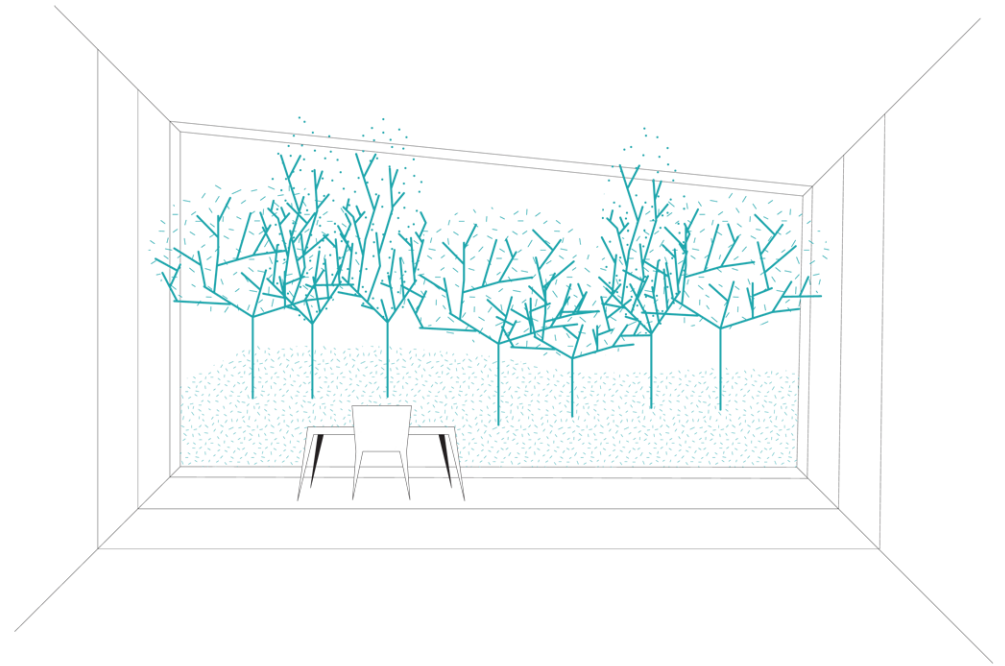
TVZEB  
VICENZA, 2012

---

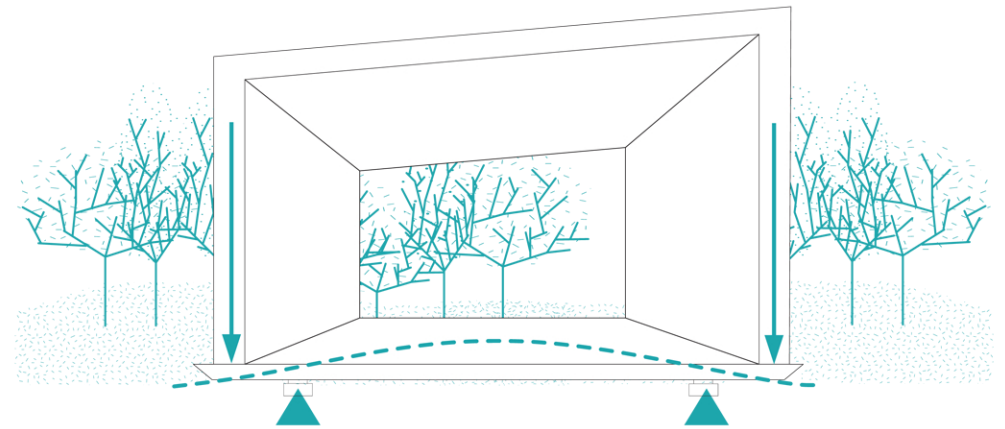
SCHEMI/SKETCHES

traverso-vighy  
strada delle Querce 22/a  
36030 Costabissara (VI)  
Italia  
[www.traverso-vighy.com](http://www.traverso-vighy.com)

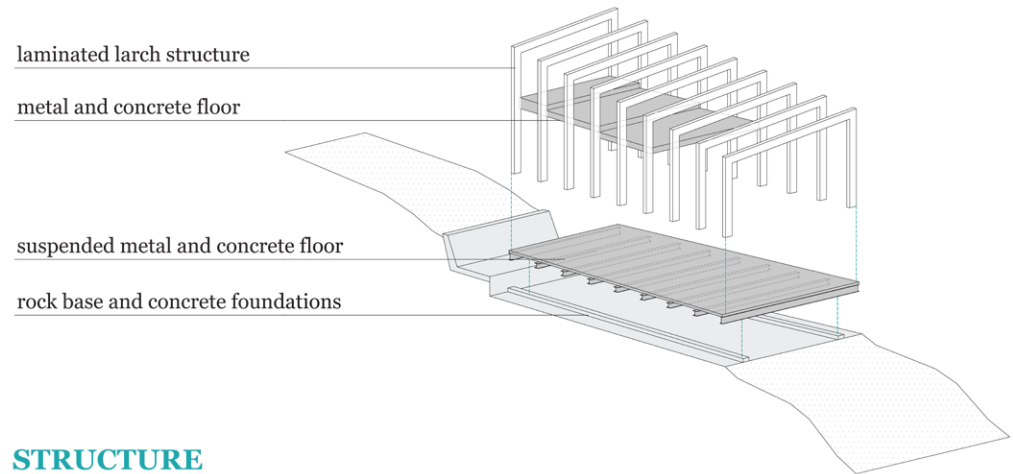




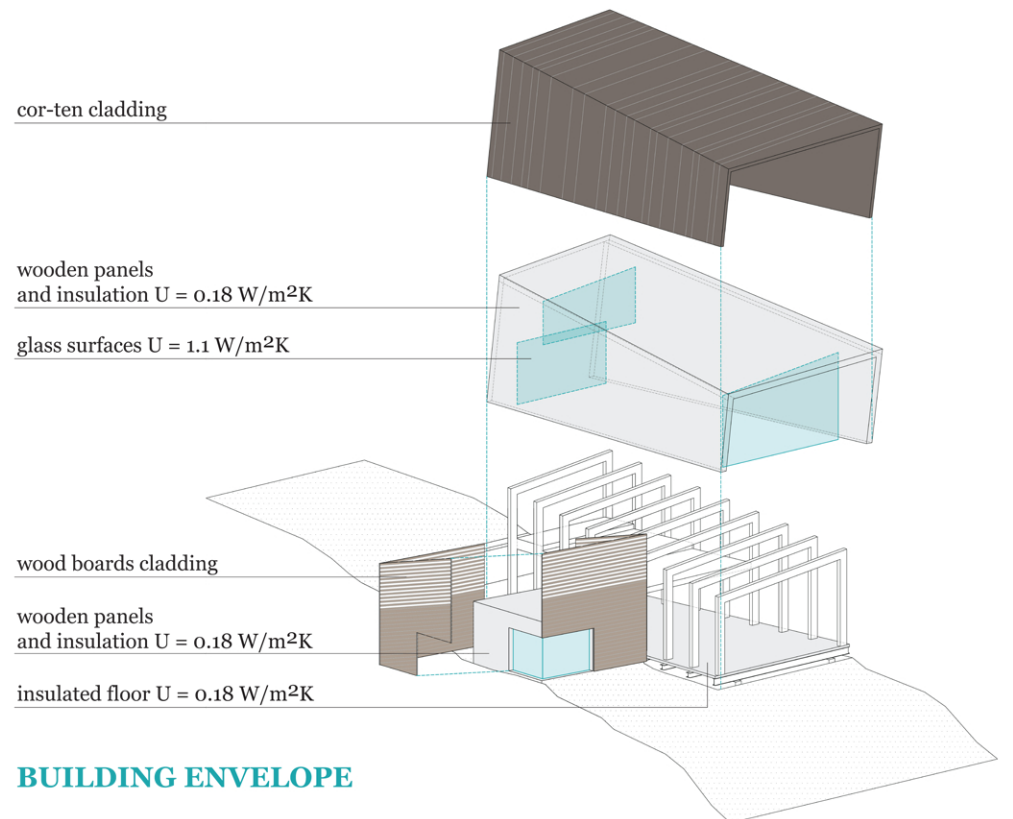
**LANDSCAPE VIEW**



**LIGHT STRUCTURE**



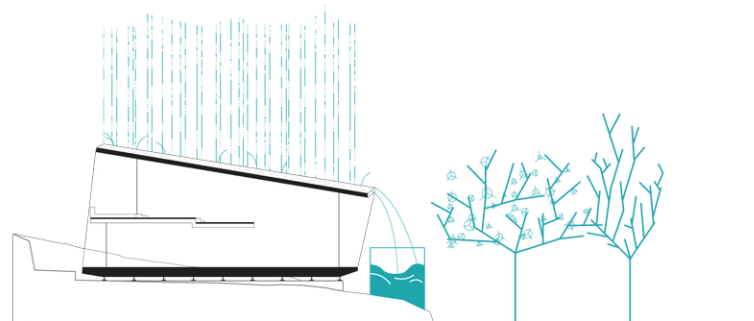
## STRUCTURE



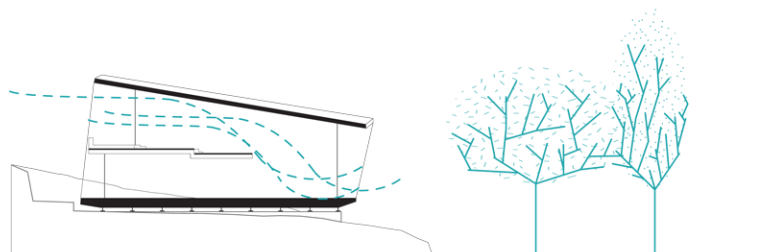
## BUILDING ENVELOPE



**SUN PENETRATION**



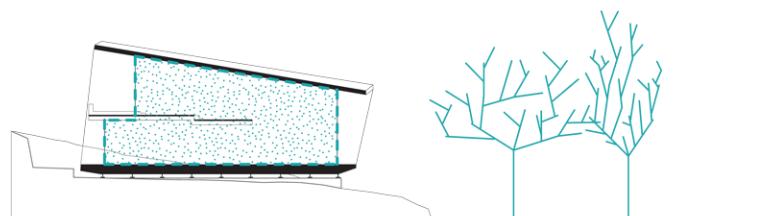
**RAINWATER HARVESTING**



**NATURAL VENTILATION**



**HEAT PUMP**



**INSULATION**



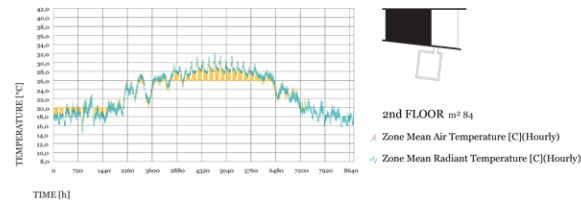
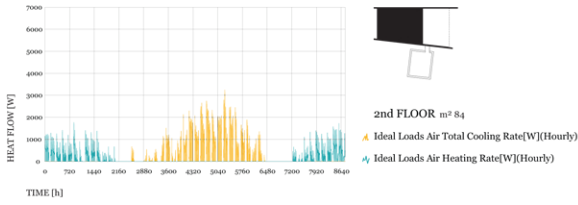
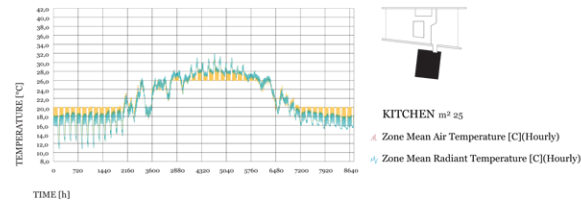
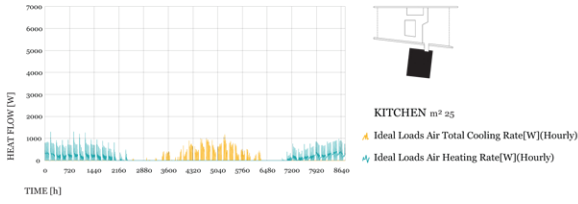
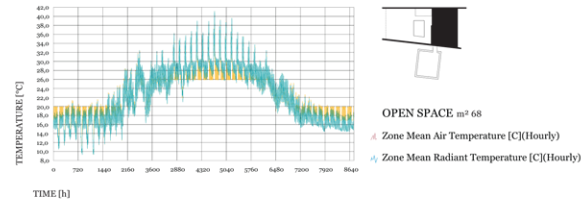
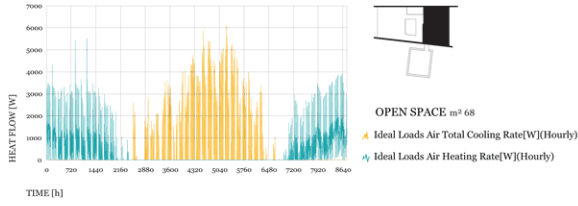
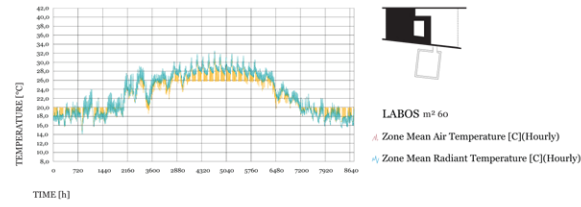
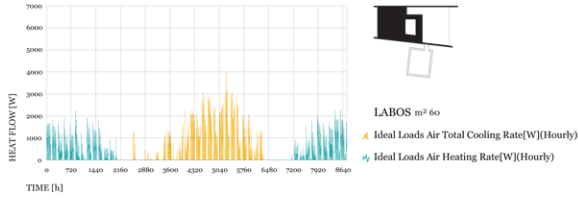
**WOOD STOVE**



**SUN ENERGY**



**CIRCADIAN LIGHT**

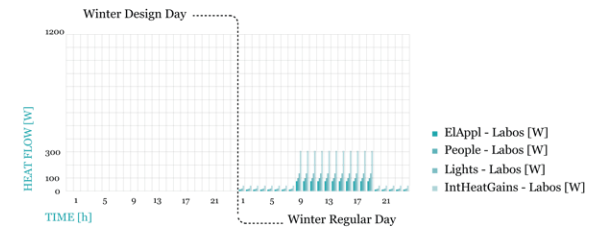
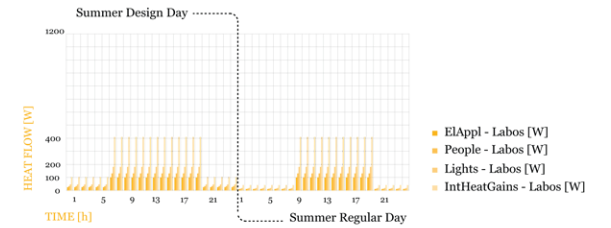
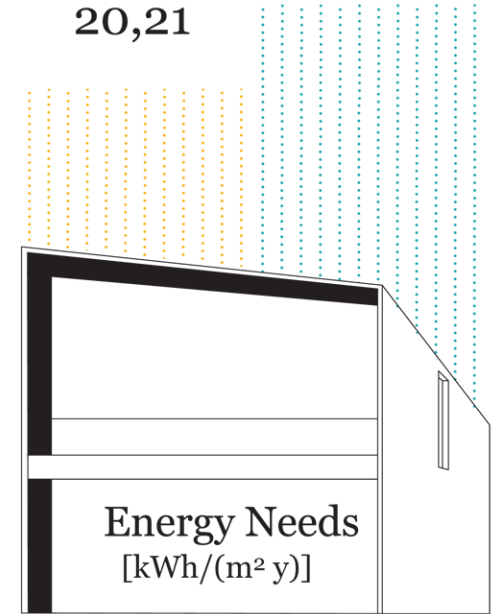


## HEAT FLOW

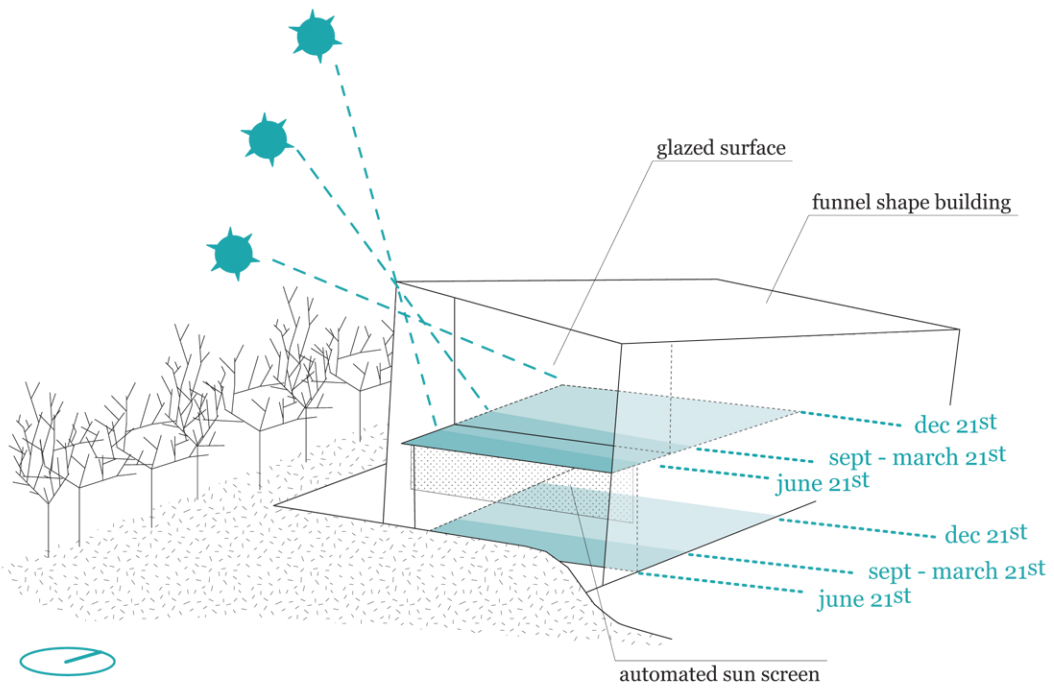
## TEMPERATURE

Heating  
20,21

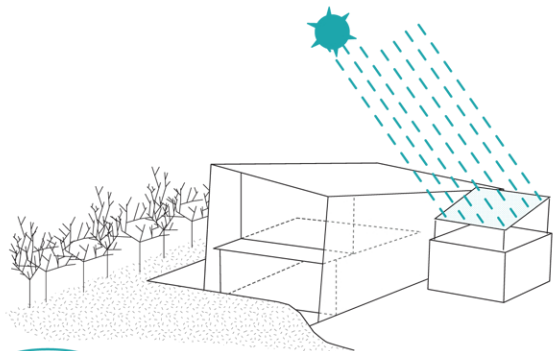
Cooling  
25,18



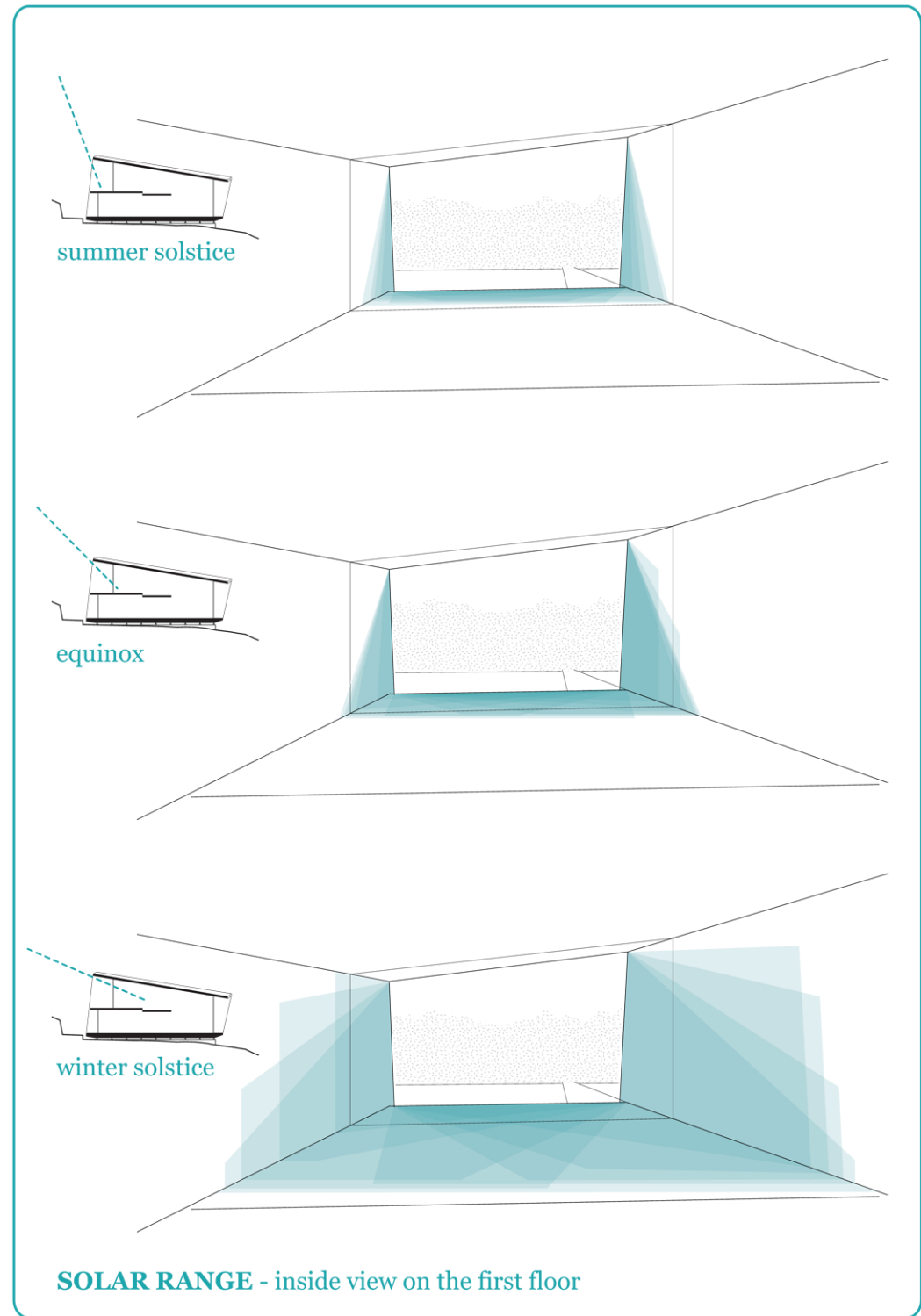
## INTERNAL HEAT GAINS

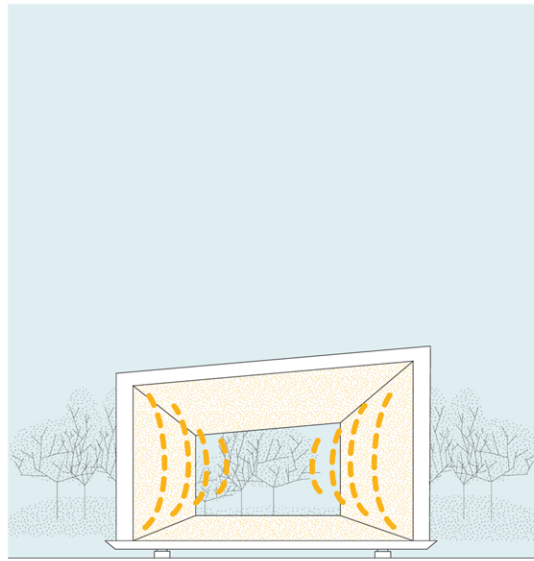
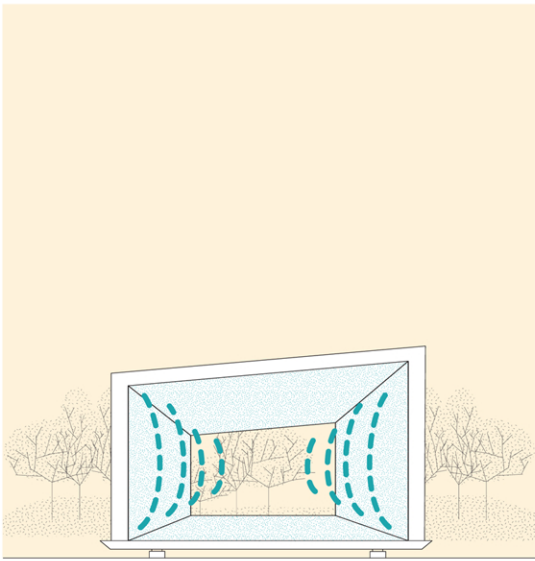


**DAYLIGHT** - direct sun at midday



**SUN ENERGY** - south oriented photovoltaic surface

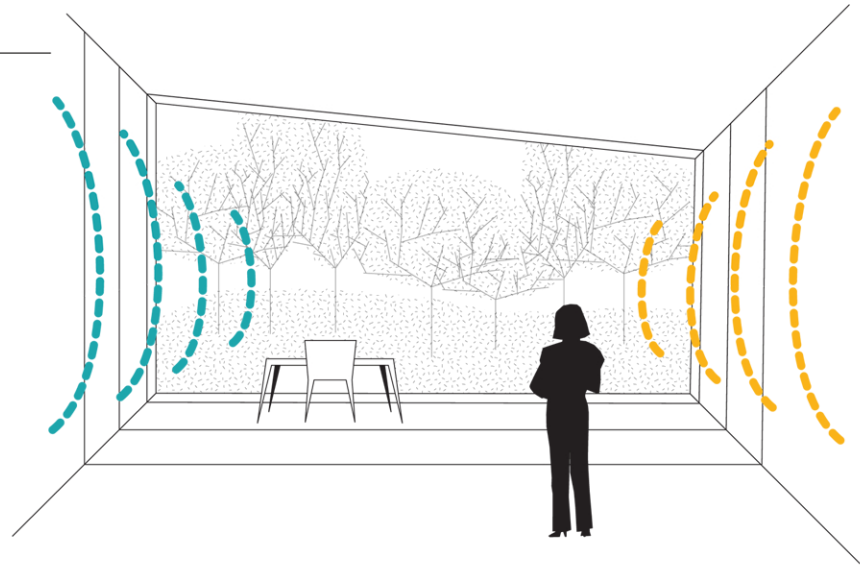




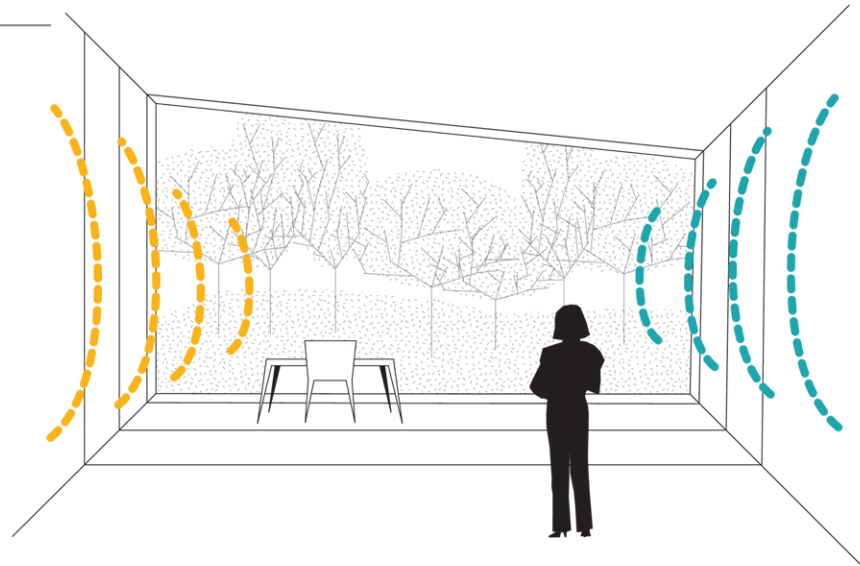
**INNER LIGHTING SYSTEM** - changing color temperature and intensity



AM



PM



reflective aluminium surface

LED spectra

LED mix

diffuse skylight

global daylight

nw 4000°K

cw 6000°K

amber

**LIGHTING SYSTEM** - led bars and aluminium surface

**CIRCADIAN LIGHT** - daylight integration follows the circadian rhythm