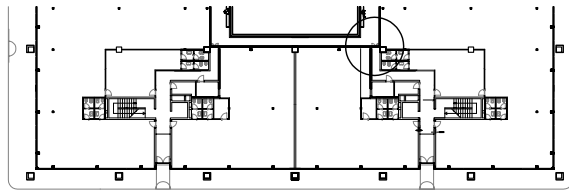


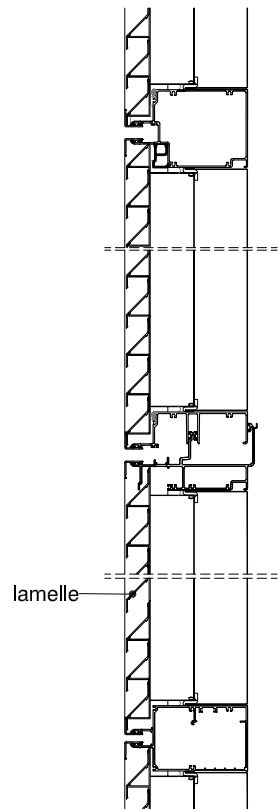
# RIVESTIMENTO IN LAMELLE

Edificio direzionale "Nordestuno" - Mestre, 2004 - arch. Ottavio Di Blasi

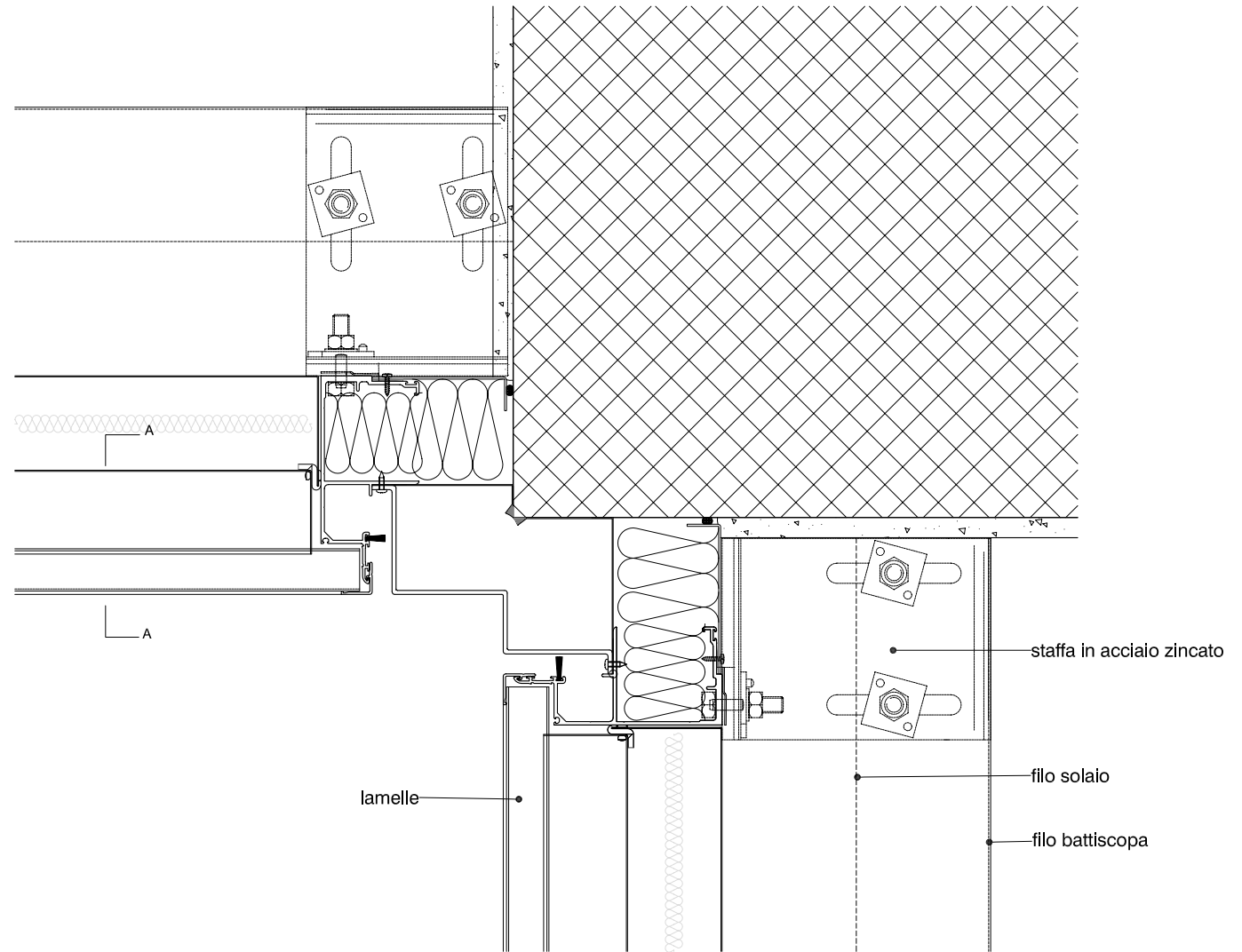
fonte: Favero & Milan Ingegneria



pianta parziale del piano terra



scala 1: 10 sezione A - A



0 10 20 30 cm scala 1: 10 sezione orizzontale