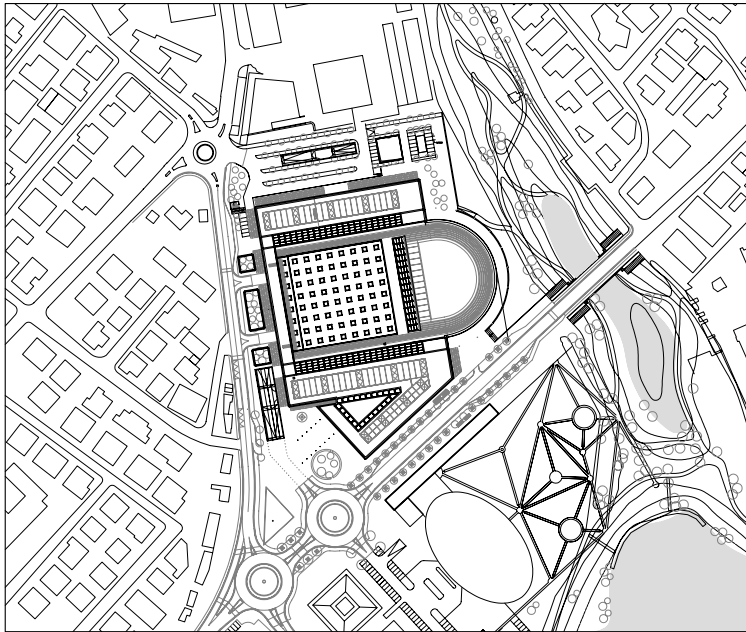


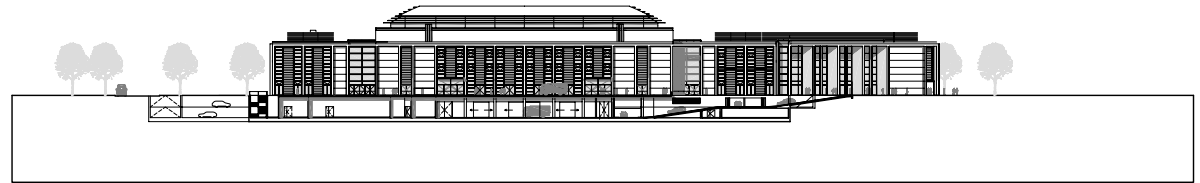
PIANTE E SEZIONI

Palazzo dei congressi di Rimini — arch.Volkwin Marg, gmp—Von Gerkan Marg und Partner

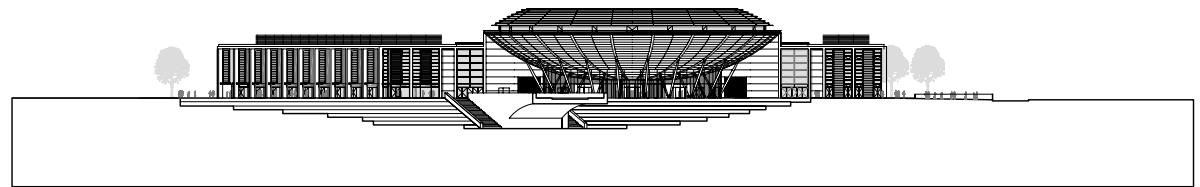
fonte: Favero & Milan Ingegneria



0 50 100 150 m scala 1:5000 planimetria generale



0 20 40 60 m scala 1:2000 prospetto ovest



0 20 40 60 m scala 1:2000 prospetto est

0 10 20 30 m scala 1:1000 sezione longitudinale

