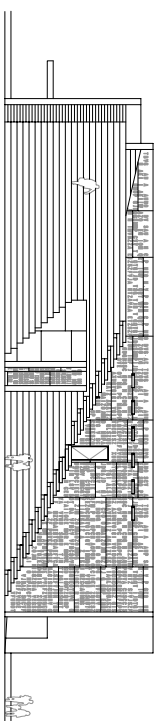


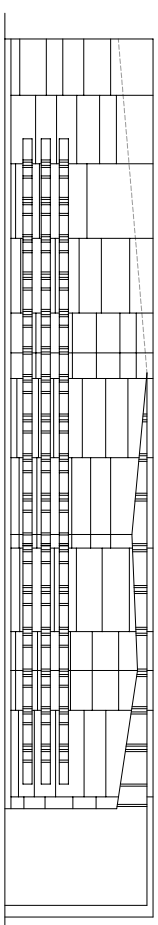
PLANIMETRIA, PROSPETTI E SEZIONI

Nuova biblioteca comunale con annesso auditorium - Curmo (Bg) 2004 - progetto di ARCHEA studio di architettura

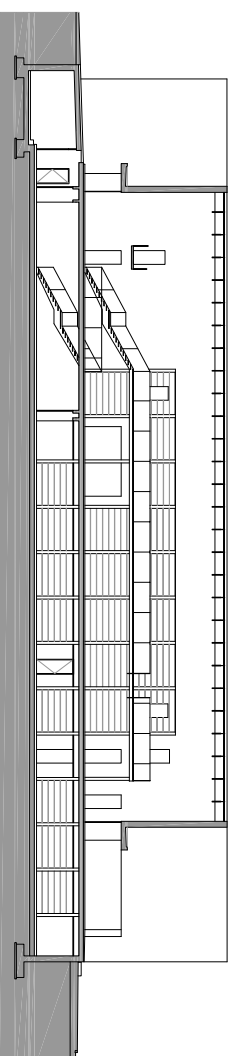
fonte: ARCHEA



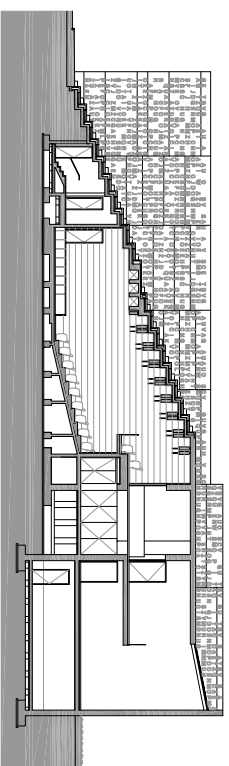
prospetto 1-1 fronte nord



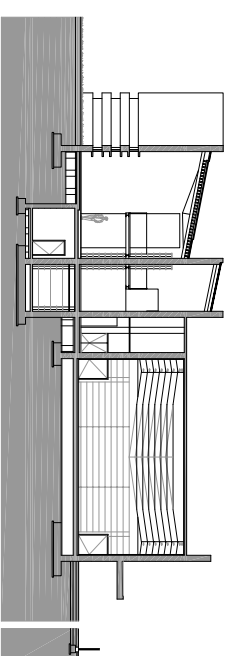
prospetto 2-2 fronte sud-ovest



sezione B-B



sezione A-A



sezione C-C

0 5 10 15 m scala 1:500

www.archinfo.it